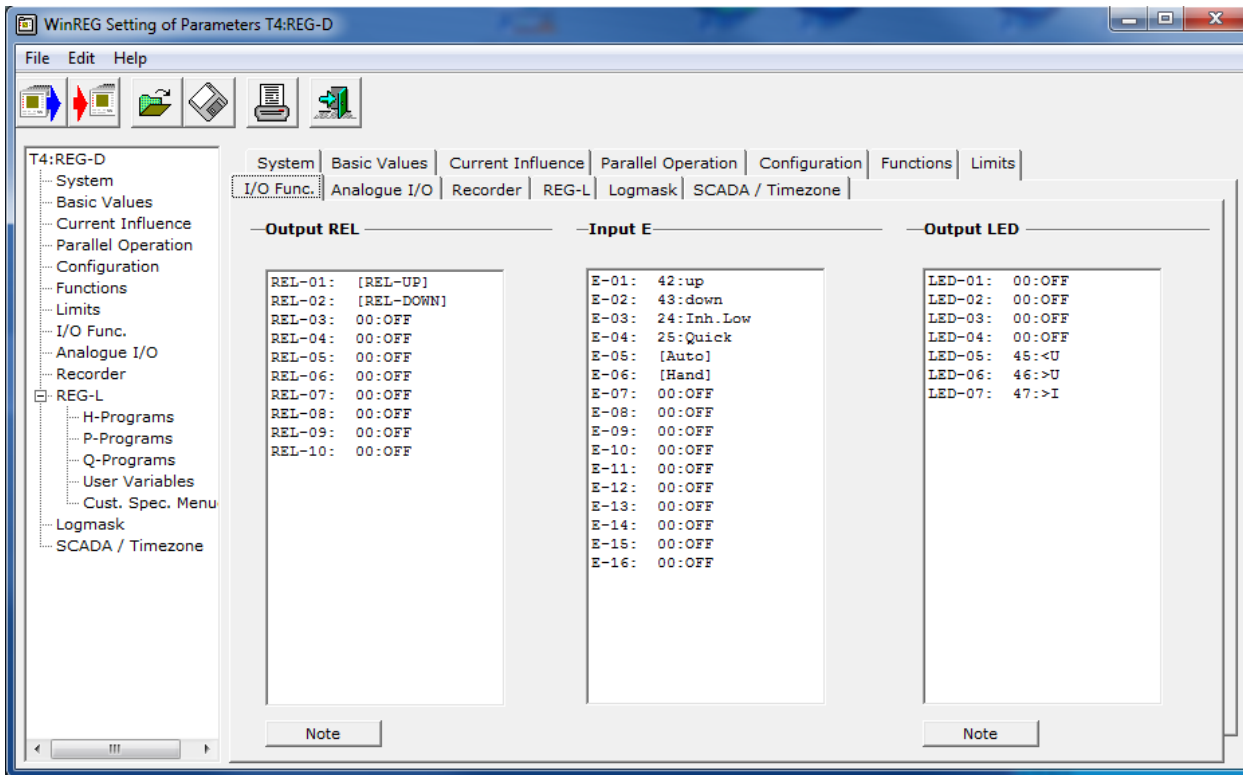




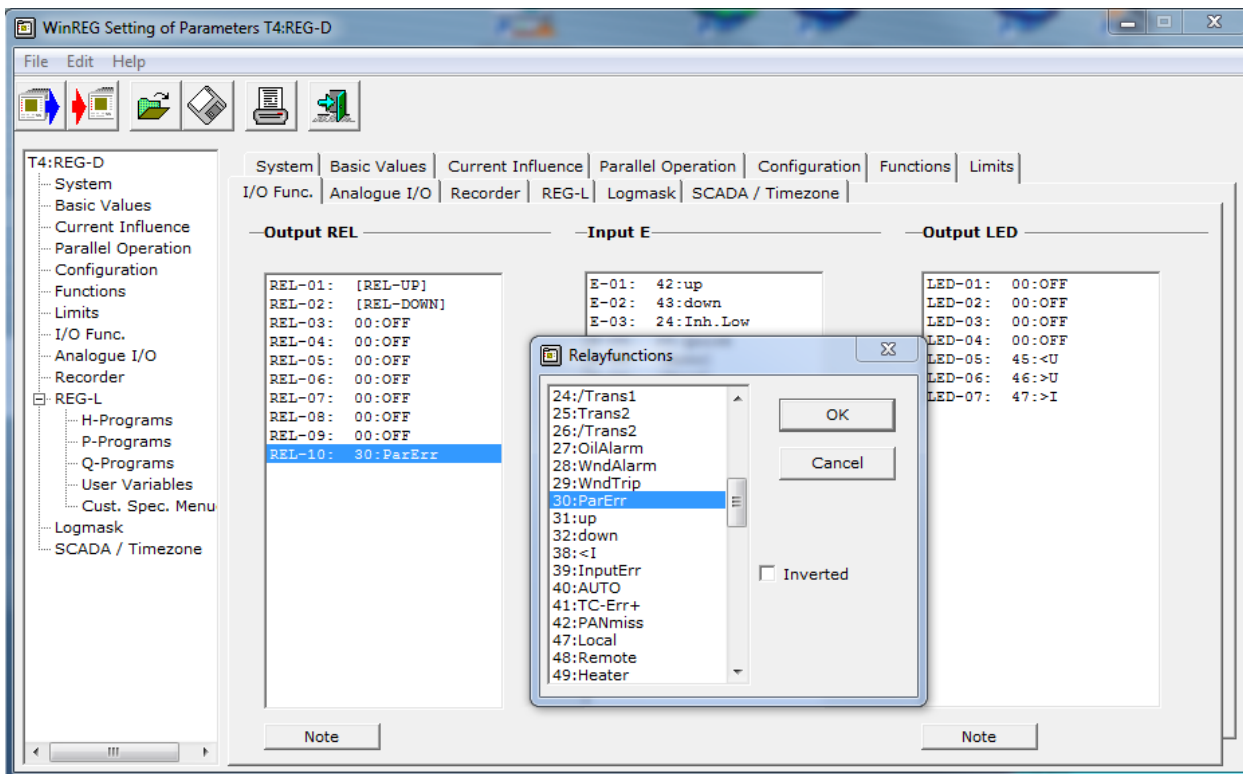


POWER AUTOMATION TECHNOLOGIES

3/ The number of relays is now 10:



4/ Assign the function to be logged to the new virtual relay, eg: ParErr





**POWER AUTOMATION TECHNOLOGIES**

5/ Activate the logging. Note that both state transitions can be logged if required, or just one.

WinREG Setting of Parameters T4:REG-D

File Edit Help

System Basic Values Current Influence Parallel Operation Configuration Functions Limits  
 I/O Func. Analogue I/O Recorder REG-L Logmask SCADA / Timezone

T4:REG-D  
 System  
 Basic Values  
 Current Influence  
 Parallel Operation  
 Configuration  
 Functions  
 Limits  
 I/O Func.  
 Analogue I/O  
 Recorder  
 REG-L  
 H-Programs  
 P-Programs  
 Q-Programs  
 User Variables  
 Cust. Spec. Menu  
 Logmask  
 SCADA / Timezone

Relay Events			Input Events			LED-Events			System Events	
	->1	->0		->1	->0		->1	->0		System Event
1			1			1			1	X PowerOn
2			2			2			2	X Auto
3			3			3			3	X Local_Remote
4			4			4			4	X Up
5			5			5			5	X Down
6			6			6			6	X TapPos
7			7			7			7	X SP-Index
8			8			8			8	X InhibitHigh
9			9			9			9	X InhibitLow
10	X	X	10			10			10	X Fast_Up
11			11			11			11	X Fast_Down
12			12			12			12	X >U
13			13			13			13	X <U
14			14			14			14	X >I
15			15			15			15	X Simulation
16			16			16			16	X NZB
17			17			17			17	X Hunting
18			18			18			18	X ClearLog
19			19			19			19	X ClrRecorder
20			20			20			20	X ClearStats
21			21			21			21	X PanelLogin
22			22			22			22	X ---