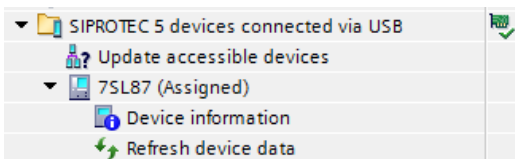
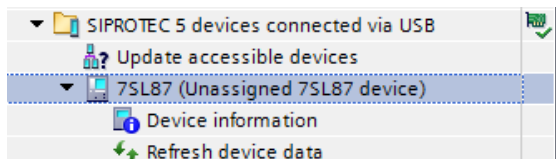


QUICK GUIDE TO: "Assigning"

Assigned connection	Not Assigned
 <p>Note "🟢" to the right indicates an active connection.</p>	

To allow transfer of data between an offline configuration (i.e. a setting file) and a relay (the online configuration) there must be an assigned connection between the two.

With an assigned connection:

- Updated settings may be uploaded to the relay
- Updated settings in the relay may be downloaded to the setting file
- Process data (measurements, indications, logs and fault records) may be downloaded from the relay and stored in setting file.
- Commissioning functions and test sequences etc may be activated.

The process of "assignment" helps ensures the connection between the "correct" offline and online instances.

Assignment occurs when the relay serial number matches the serial number in the offline configuration file.

Normally a setting file is created prior to the connection to the physical relay and the setting file has no serial number. When first connecting to the relay, it is normal to "initialise" the relay with the new setting file. Among other things, the initialisation updates the offline configuration file with the serial number of the relay to allow an "assigned" connection.

It is also possible to manually assign a connection or change an assignment (providing the relay has been initialised at least once) without initialisation.

QUICK GUIDE TO: "Initialisation"

Prior to its first initialisation the relay does not have any settings or IP address, thus an "initialisation" must be done via the USB port (and not an Ethernet interface). Initialisation sends an offline DIGSI 5 configuration to the relay, and creates an "assigned connection".

Initialising a relay will clear any pre-existing settings, fault records and all other process data.

Initialising is appropriate when a completely new setting file is to be loaded to a relay.

Initialising is not required for any further update of settings, simply upload the changes.

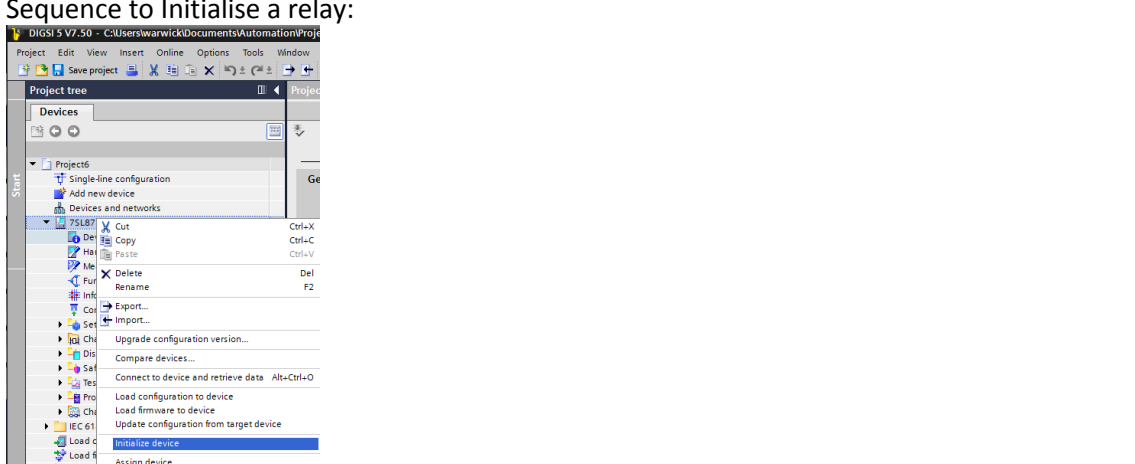
Initialisation is NOT appropriate to force an "assignment" to connect to an in-service relay to extract settings or fault records etc.

To initialise a device:

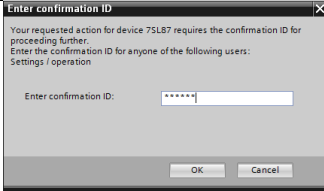
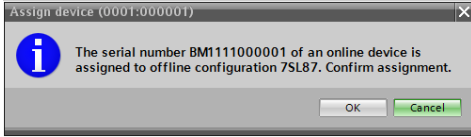
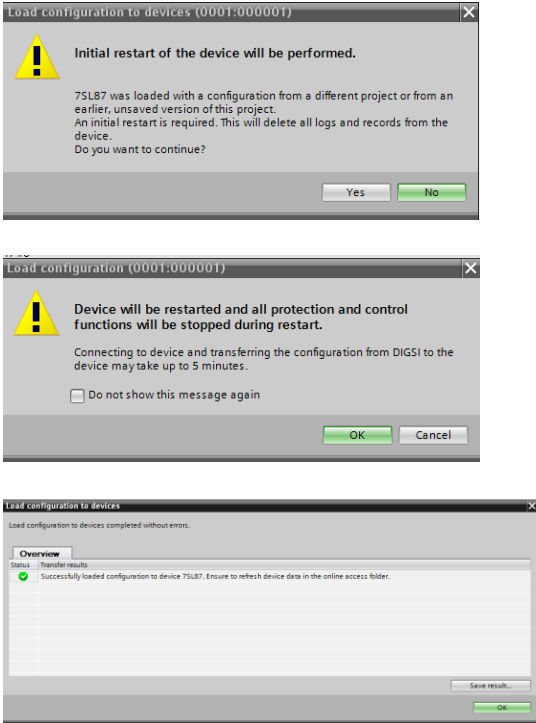
- You must have a valid^[1] setting file for the intended relay
- A USB connection to the relay (Initialisation can only be done by the USB interface)
- Your copy of DIGSI 5 will also need to have the matching versions of device drivers (and protocol drivers) as required by the setting file configuration version.

[1] Valid setting file - The setting file must match the relay type/hardware and firmware, and the relay must have the same or more function points licenced.

1 Sequence to Initialise a relay:

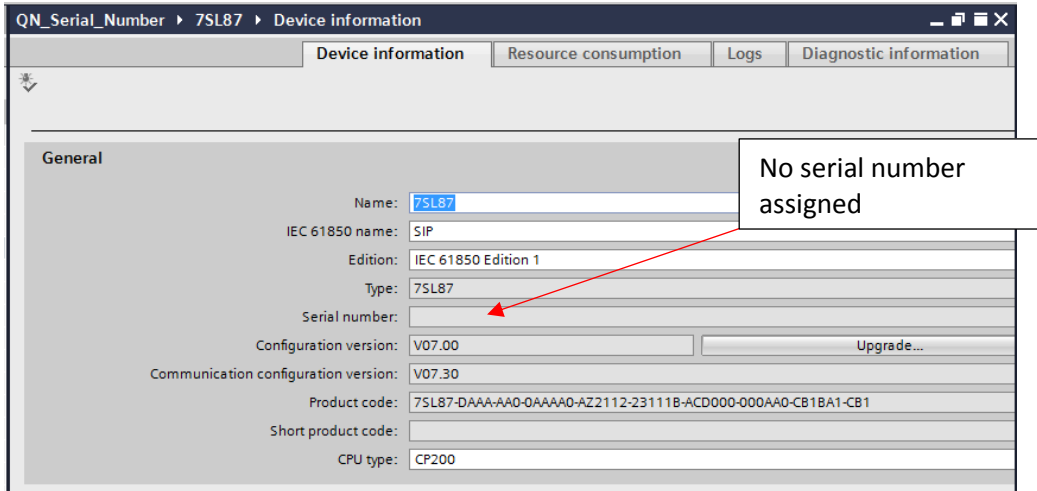


The screenshot shows the DIGSI 5 V7.50 software interface. The 'Project tree' on the left shows a project named 'Project6' with a device named '75L87' selected. A context menu is open over the device, listing various actions such as 'Cut', 'Copy', 'Paste', 'Delete', 'Rename', 'Export...', 'Import...', 'Upgrade configuration version...', 'Compare devices...', 'Connect to device and retrieve data', 'Load configuration to device', 'Load firmware to device', 'Update configuration from target device', 'Initialise device', and 'Assign device'. The 'Initialise device' option is highlighted in blue.

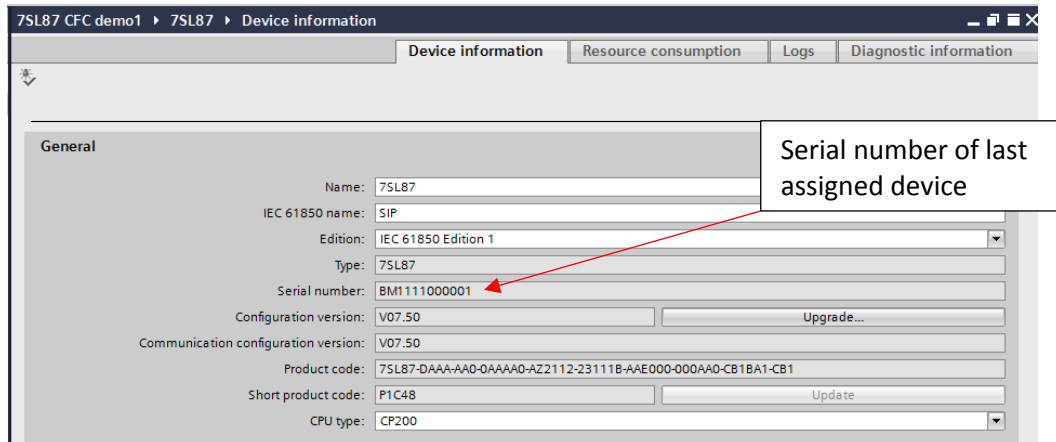
2	
3	<p>Prompt confirms the relay serial number that is going to be copied to the setting file.</p> 
4	<p>Prompts during initialisation</p> 

QUICK GUIDE TO: Serial numbers in setting files

A setting file when first created in a project will have a blank Serial Number.



The serial number field in the setting file will be updated with the serial number of the last relay that was “Initialised” with that setting file, or the last relay where an “Assignment” was created.



It is no longer possible to manually enter serial numbers in the offline setting file.