

This issue of DIGSI 5 Quick Notes covers:

- What happens if setting file and device firmware don't match?
- How to update relay firmware
- How to select firmware version when creating a setting file
- How to change a setting file to be used with a relay with different firmware

QUICK GUIDE TO: What happens if setting file and device firmware don't match?

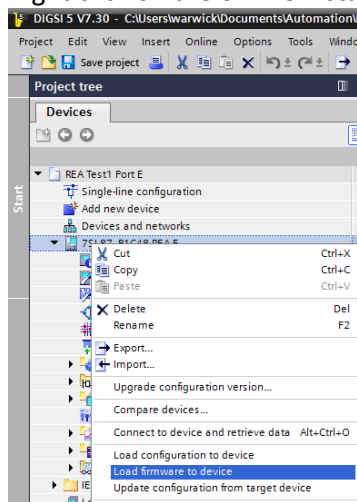
When attempting to load a setting file, if the setting file specifies a different version of relay firmware to the firmware currently in the relay, then a warning will be given, and the setting file cannot be loaded.

Firmware is loaded separately to settings.

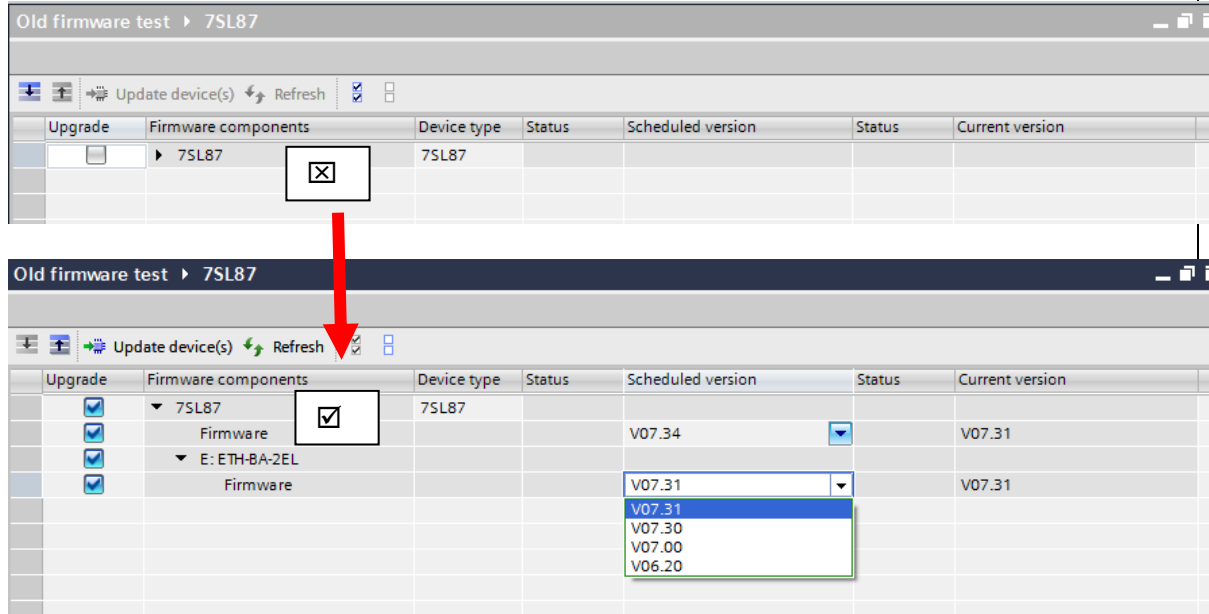
QUICK GUIDE TO: Updating relay firmware

Refer to the 'SIPROTEC 5 Operation' manual 'Firmware and Parameter Set Update' section for full details on how to update firmware.

- 1 Connect via USB to the target relay (you do not have to have device showing as an online instance)
Right click on the offline instance and select "Load firmware to device".



- 2 The Firmware update screen is shown, BUT we recommend expanding the initial view, to show the specifics of the upgrade



Old firmware test ▶ 7SL87

Update device(s) Refresh

| Upgrade | Firmware components | Device type | Status | Scheduled version | Status | Current version |
|--------------------------|---------------------|-------------|--------|-------------------|--------|-----------------|
| <input type="checkbox"/> | ▶ 7SL87 | 7SL87 | | | | |

Old firmware test ▶ 7SL87

Update device(s) Refresh

| Upgrade | Firmware components | Device type | Status | Scheduled version | Status | Current version |
|-------------------------------------|---------------------|-------------|--------|-------------------|--------|-----------------|
| <input checked="" type="checkbox"/> | ▼ 7SL87 | 7SL87 | | V07.34 | | V07.31 |
| <input checked="" type="checkbox"/> | Firmware | | | | | |
| <input checked="" type="checkbox"/> | ▼ E: ETH-BA-2EL | | | V07.31 | | V07.31 |
| <input checked="" type="checkbox"/> | Firmware | | | V07.31 | | V07.31 |

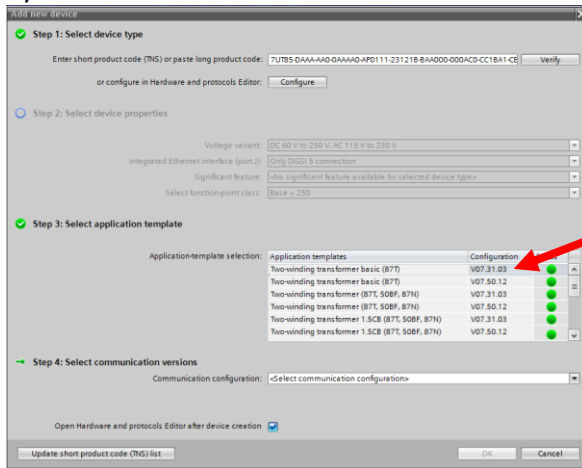
Check the Upgrade box for relay and/or modules to be updated, select the firmware version. The “Update device(s)” is enabled, which when clicked begins the update.

The list of available versions of firmware that is shown depends upon what versions of device drivers have been loaded into DIGSI 5 for that relay family.

QUICK GUIDE TO: Creating a setting file for a specific relay firmware

If creating a setting file from scratch for a specific relay firmware, make sure the desired DIGSI Device Driver is installed in DIGSI 5

- 1 When adding a new device, 'step 3' defines the firmware version. The choices available is defined by the device drivers that have been loaded into DIGSI 5.



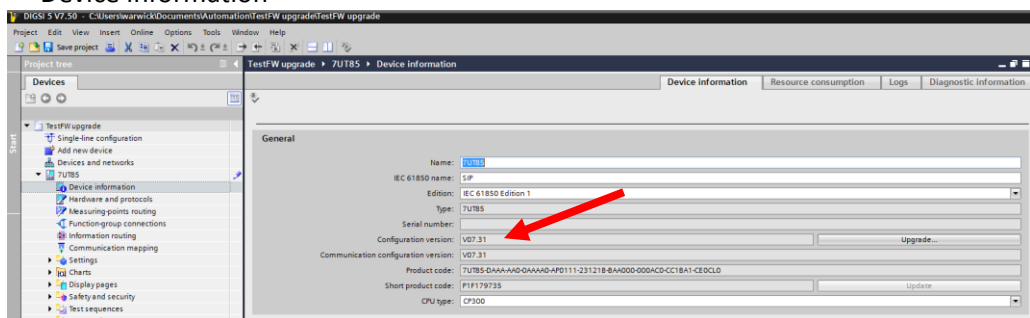
Step 4 defines the protocol version.

QUICK GUIDE TO: Updating a setting file to use with a different relay firmware

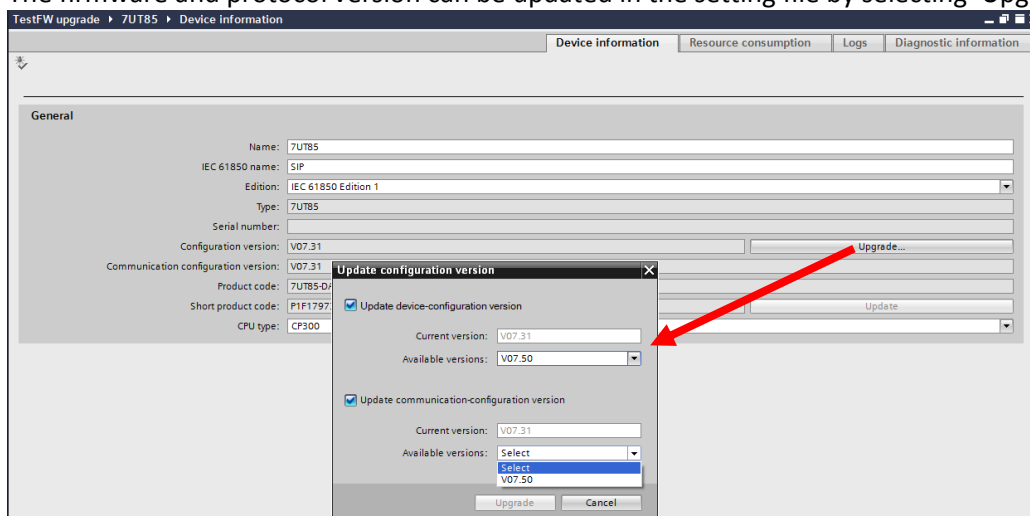
It possible to update the firmware specified in the setting file. Note that it is only possible to advance the setting file version, you cannot downgrade setting file version.

While upgrading a setting file is a reasonably quick and automated task, new firmware may add new features or require some changes and/or add new settings with default values. Caution is recommended.

1 The firmware versions for an existing setting file can be confirmed via: “Device information”



2 The firmware and protocol version can be updated in the setting file by selecting ‘Upgrade...’



The available choices are dictated by the DIGSI 5 device drivers loaded.

You **cannot** downgrade the version.